

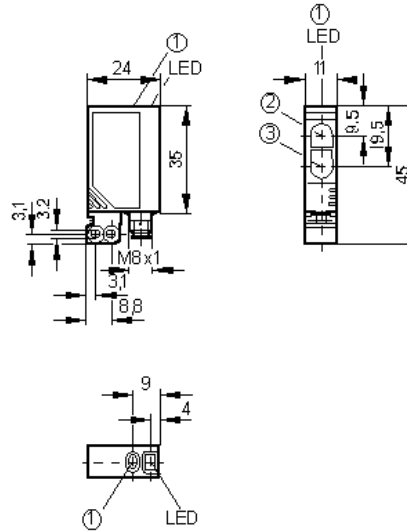
Diffuse reflection sensor

OJ5048

OJH-FPKG/SO/AS
Rectangular plastic
Quick disconnect

Electronic lock
Background suppression
External teach function
Side sensing

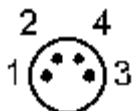
Range 15 ... 400mm
(Range referred to white paper
200 x 200 mm, 90 % remission)
adjustable

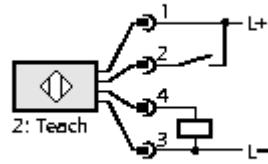


1: push button, 2: receiver, 3: transmitter

Electrical design	DC PNP
Output	light-on / dark-on programmable
Light spot diameter [mm]	< 18 (TW=150mm)
Operating voltage [V]	10...30 DC
Current rating [mA]	200
Short-circuit protection	Yes (non-latching)
Reverse polarity protection	yes
overload protection	yes
Voltage drop [V]	< 2.5
Current consumption [mA]	< 21
Switching frequency [Hz]	1000
Type of light	Transmitter red light 660 nm
Operating temperature [°C]	-25...60
Protection	IP 68 / IP 69 K ☐
EMC	EN 60947-5-2
Housing material	housing: ABS fixture: diecast zinc LED window: SEPS push button: SEPS
Material lens	PMMA
Function display	
Switching status LED	yellow
Power LED	green
Connection	M8 connector

Wiring





Remarks

cULus - Class 2 source required

Accessories (included)

Basic clip, E20964, 2 mounting screws, M3 x 16, 2 spring washers, 2 nuts

efector, inc., 805 Springdale Dr., Exton, PA 19341

— We reserve the right to make technical alterations without prior notice. — US - OJ5048 — 06.03.2003