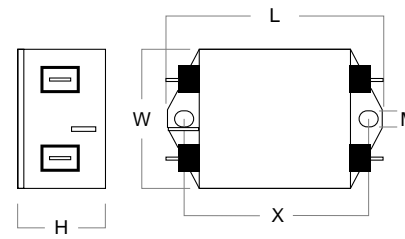


FSD Series Single Phase RFI Filters 200-250Vac, 48-62Hz

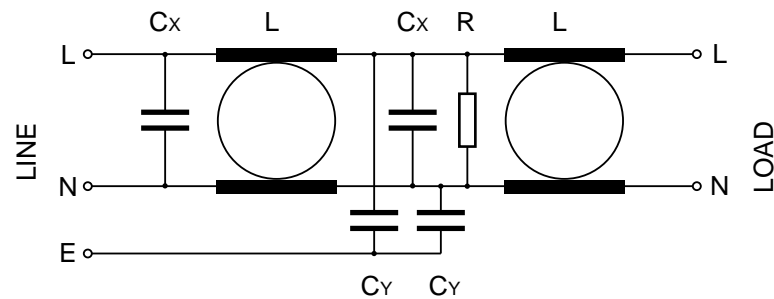
RFI filters for industrial applications up to 30A.
 All filters are constructed with self-healing X and Y interference suppression capacitors approved to EN132400, CSA & UL. Input and output connections by faston terminals to 20A and shrouded terminals for 30A.
 All units are manufactured to EN133200 specifications and carry the CE mark.



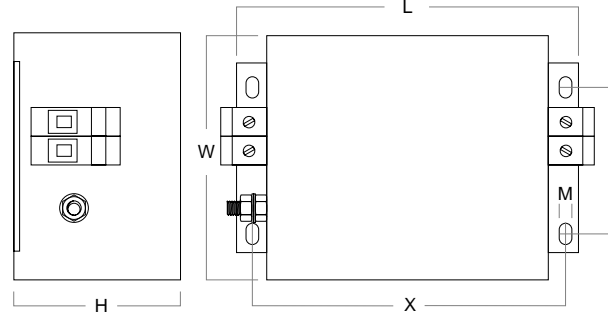
RF 1001-FSD to RF 1020-FSD



Circuit Schematic



RF 1030-FSD



Filter part no.	Rated Current @ 40°C (A)	Leakage Current @ 250Vac 50Hz (mA)	L mH	Component values			Terminals (mm ²)	Case Dimensions L x W x H (mm)	Mounting		Filter Case
				Cx μF	Cy nF	R MΩ			X x Y x M (mm)		
RF 1001-FSD	1	0.4	12	0.22	4.7	1	faston	71 x 47 x 29	61	x M5	FNA-1
RF 1003-FSD	3	0.4	2.5	0.22	4.7	1	faston	71 x 47 x 29	61	x M5	FNA-1
RF 1006-FSD	6	0.4	1	0.22	4.7	1	faston	71 x 47 x 29	61	x M5	FNA-1
RF 1010-FSD	10	0.4	0.8	0.47	4.7	0.47	faston	85 x 54 x 30	75	x M5	FNB-1
RF 1012-FSD	12	0.4	0.6	0.47	4.7	0.47	faston	85 x 54 x 30	75	x M5	FNB-1
RF 1016-FSD	16	0.4	0.65	0.33	4.7	1	faston	85 x 54 x 40	75	x M5	FNC-1
RF 1020-FSD	20	0.4	0.6	1	4.7	0.22	faston	114 x 58 x 45	103	x M4	FND-1
RF 1030-FSD	30	0.8	0.6	1	10	0.22	0-10	119 x 86 x 58	109 x 51	x M4	FNF-1